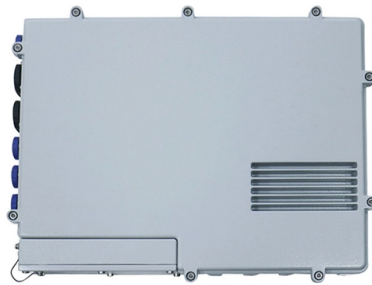


Core Switch Bond



Overview

Includes dual power supplies, hot-swappable modules, link aggregation (LAG), and support for HSRP/VRRP. Modular chassis or stackable designs make it easy to scale as your network grows. 1X support, SNMP, CLI/Web GUI, and network access control. Unlike access switches, which connect directly to end-user devices, the core switch focuses on aggregating and routing traffic between other switches, minimizing latency. A backbone switch, also known as a core switch, is a high-performance network switch engineered to interconnect different subnets, access layer switches, or distribution layer devices within a network. Engineered to aggregate massive volumes of data from distribution switches, it provides ultra-low latency and maximum throughput to ensure uninterrupted routing and packet. This help center can answer your questions about customer services, products tech support, network issues. In a nutshell, it helps convey vast chunks of data at greater speeds.

Article Content

Mar 19, 2026

Was ist ein Core-Switch? Funktionen und Bedeutung

Erfahren Sie, was ein Core-Switch ist und wie er die zentrale Rolle in einem Unternehmensnetzwerk spielt. Unsere Erklärung bietet Einblicke in die

Sep 28, 2025

What Is a Core Switch in Networking?

A core switch in networking serves as the high-capacity backbone, centralizing data flow and ensuring efficient communication between

Nov 09, 2025

What Is a Core Switch? Network Backbone Architecture Guide

While edge switches handle user connectivity and routers manage external internet traffic, the core switch acts as the central nervous system bridging your entire local environment.

Jun 19, 2026

What Is a Core Switch? Network Backbone Architecture Guide

Discover what a core switch does in a 3-tier network model. Learn about ASIC routing, collapsed core vs dedicated core topologies, and SMB sizing guides.

Oct 01, 2025

Maximizing Linux Server Reliability and Speed with Network Bonding

Bonding dual-NICs for primary server infrastructure to maximize uptime Linking physical servers to different switches to protect against switch failure Bonding Ethernet with wireless on a

Nov 01, 2025

Core Switch Explained: Key Functions and Benefits

Unlike edge switches, core switches are the network's backbone, improving data routing and performance. This is essential for businesses, data centers, and ISPs that need fast, reliable

Dec 15, 2025

What is Core Switch and How to Choose

Discover what a core switch is and learn how to choose the right one for your network. Explore key features in selecting a core layer switch. Make

Jul 12, 2025

What Is Core Switch?

What Is Core Switch? Understanding the Backbone of Your Network A core switch is the high-capacity networking switch that forms the backbone of a network, directing data traffic between

May 01, 2026

Coreswitch - Wikipedia

Ein Coreswitch ist ein verbindendes Gerät in Computer-Netzwerken. Coreswitches sind meist sehr leistungsfähige Switches, die das Rückgrat (Backbone) eines

Jul 09, 2025

Chapter 3. Configuring a network bond

Chapter 3. Configuring a network bond Additional resources A network bond aggregates physical and virtual network interfaces into a single logical one. The

Jun 16, 2026

Core switch definition - Glossary | NordVPN

A core switch is the primary switch in a network, built to transfer data fast. A core switch sits at the top of a network's structure.

Dec 30, 2025

What Is a Core Switch?

A core switch is the backbone of a large-scale network, designed to handle massive volumes of traffic with ultra-low latency and maximum reliability. Sitting at the top of the hierarchical model, core

Oct 17, 2025

Chapter 3. Configuring a network bond

3.1. Understanding the default behavior of controller and port interfaces 3.2. Upstream switch configuration depending on the bonding modes 3.3. Configuring

Dec 17, 2025

Core Switch vs Normal Switch: Key Differences Explained

What are the Differences Between the Core Switch and Normal Switch? By fiberlife. Posted on January 17, 2025 Networking infrastructures rely

Sep 22, 2025

What Is a Backbone Switch? Everything You Need to

What is a backbone switch? Discover the role of a backbone switch in modern networks, including key features, deployment locations, and use cases.

May 11, 2026

Understanding Network Switches: The Backbone of Modern ...

Network switches are essential components in modern networking, enabling seamless data communication between devices within a network. From small office setups to sprawling

Jul 22, 2025

Differences Between the Core Switch and Normal

A core switch is not a type of switch, but a switch placed at the core layer (the backbone of the network). Generally, large-scale enterprise networks

Nov 11, 2025

Core Switch

The ToR switches are electronic packet switches while the core switches are a combination of optical and electronic switches. The electronic switches are used for all to all communication among pods,

Oct 15, 2025

What Is a Core Switch?

Explore what a core switch does, why it's essential for enterprise networks, and how to choose the right model. Includes real-world applications and Cisco/Huawei/Aruba model comparison.

Dec 21, 2025

What is a Core Switch | Functions and Difference over Normal Switch

It is a powerful backbone switch in the center of the network core layer, which centralizes multiple aggregation switches to the core and implements LAN routing.

Aug 20, 2025

Understanding the Core Switch: Key Differences and Uses

Explore the core switch's role as the backbone of your network. Discover key differences, uses, and insights into layer 3 core switch technology.

May 24, 2026

How To Configure Network Bonding In Linux

Learn how to configure network bonding in Linux for redundancy and performance using Netplan and nmcli commands.

Jan 23, 2026

networking:bonding

The bond's MAC address is externally visible on only one port (network adapter) to avoid confusing the switch. In bonding version 2.6.2 or later, when a failover occurs in active-backup mode, bonding will

Jun 25, 2026

Core Switches: The Pillar of Network Infrastructure

Get a closer look at core switches: the nerve centers of network infrastructure that enhance performance and facilitate growth.

Oct 31, 2025

What Is a Core Switch in Networking?

What Is a Core Switch in Networking? Understanding the Backbone of Your Network A core switch in networking serves as the high-capacity

May 12, 2026

What is a Core Switch | Functions and Difference over Normal Switch

What is a core switch and how it works? This article builds the basics of this kind of switch for the ones who don't know anything about it. What is a Core Switch? It is a powerful

Contact Us

For more information, pricing, or custom solutions, please contact us:

Website: <https://elagage-lorrain.fr>

Email: sales@elagage-lorrain.fr

Phone: +33 6 47 82 19 35

Address: 15 Rue de la République, 69002 Lyon, France

This document is for informational purposes only. Specifications subject to change without notice.

