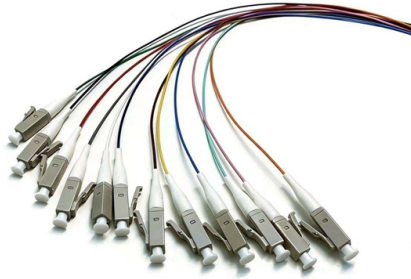


Danger of loose wiring terminals in distribution box



Overview

Addressing loose electrical connections is a critical step in optimizing energy use and reducing both costs and risks. The heat generated at these terminations can lead to insulation failure, short circuits, and potentially fire. An MCB Distribution Box (DB) is the central point of power distribution in any electrical installation—whether residential, commercial, or industrial. This break in the intended solid circuit pathway introduces an unintended and variable resistance into the circuit. There are many factors that can contribute to loose electrical connections, such as: Loose electrical connections can occur anywhere in the electrical system, but they are more likely to happen in places where there is frequent movement or stress, such as outlets, switches, light fixtures. At a loose termination, contact area is reduced and surface oxides build. Resistance at that tiny interface rises. With normal load current still flowing, I^2R losses concentrate right at the connection point.



Article Content

Nov 28, 2025

What are the common problems of distribution boxes?

However, in actual operation, problems such as loose terminals and broken terminals often occur, resulting in poor electrical connection and affecting

Nov 27, 2025

Safety in electrical panels and switchboards

Introduction Safety in electrical panels and switchboards is a critical concern in the Health, Safety, and Environment (HSE) domain. These components are the heart

Nov 02, 2025

The Dangers of a Loose Wiring Connection

While the wiring system itself is designed to handle electrical current with minimal resistance, a loose connection acts as a bottleneck. This forces the current to bridge a small gap or

Jun 29, 2025

Exposed Wires: The Dos and Don'ts

Loose wires in the attic or elsewhere Frayed, damaged wires and extension cords If you see any of these, you should immediately recognize them as a safety hazard.

Jul 26, 2025

What if a small loose connection inside your distribution box could ...

- Burn marks or discoloration near terminals
- Melted or cracked insulation
- Loose or exposed wiring
- Corrosion on connectors
- Broken panel doors or damaged enclosure parts

Jan 28, 2026

The Hidden Danger of Loose Connections in Electrical

The danger of loose connections The main reason for a fire caused by a loose connection in an outlet that nothing is plugged into is due to arcing, where

Jun 09, 2026

How to Avoid Loose Electrical Connections and Prevent

Loose electrical connections are a common problem that can lead to serious consequences. They can cause overheating, sparks, short circuits, and

Jul 02, 2025

Why Loose Electrical Connections Happen and How to Fix Them

Over time, loose terminals can happen due to vibration, wear, or thermal expansion. When terminals are not securely tightened or are subjected to excessive movement, they can

Nov 24, 2025

Inspecting Electrical Connections

The wiring that supplies a branch circuit in the average home originates in the distribution panel at the overcurrent device terminals for the ungrounded

Aug 02, 2025

SAFEHOUSE GUIDE TO DISTRIBUTION BOARDS,

SAFEHOUSE GUIDE TO DISTRIBUTION BOARDS, ISOLATORS AND EARTH LEAKAGE UNITS The distribution board in any building contains

Mar 01, 2026

Common troubleshooting of distribution boxes: analysis of causes of ...

Bad Handshake Connections: Loose wire connections create resistance. And where there's resistance, there's heat - like the friction from rubbing hands together constantly.

Aug 31, 2025

Loose Connection in an Electrical Circuit

Learn about loose connections in electrical circuits, how they occur, and essential solutions to fix them. Ensure safe and efficient electrical systems with expert advice.

Nov 28, 2025

How to Test and Fix Loose Electrical Connections

Learn how to use a multimeter and a caliper to test and measure electrical connections, what causes and effects loose connections have, and how to

Dec 17, 2025

Power Distribution Terminal Block: Prevent Loose Wiring

The power distribution terminal blocks are specifically engineered to address this core problem. It ensures a stable and secure electrical connection, dramatically reducing the risk of a

Feb 19, 2026

How to Install a Cable Distribution Box Safely and

Understanding Cable Distribution Boxes A cable distribution box is an electrical device used to collect, distribute, and protect electrical power. It is

Jun 06, 2026

Loose Electrical Connection Causes Breaker Trip

A circuit breaker can trip or fuse due to nothing more than a loose wire. This can happen even if the wire is still connected to an outlet but the

Oct 22, 2025

Checking for Loose or Damaged Terminals in Routine Wiring

Learn how to inspect wiring terminals for looseness or damage during routine maintenance checks, including de-energizing the circuit, visual inspection, physical checks, electrical

Apr 29, 2026

6 Common Wire Connection Problems and Their Solutions

Loose Wire Connections at Switches and Outlets By far the most common problem is when screw terminal connections at wall

Dec 12, 2025

Detecting Loose Electrical Connections | Blog | IRISS

Loose electrical connections are a serious safety hazard. The heat generated at these terminations can lead to insulation failure, short circuits, and

Jan 01, 2026

Loose Electrical Connections: Risks, Fires & Breakers

Loose terminations can overheat, arc, and fail without tripping breakers. Learn the risks, NFPA 70B standards, and prevention with torque and IR scans.

Oct 22, 2025

Loose Electrical Connection Causes Breaker Trip

Even if a wire appears connected, if the terminal screw isn't tightened properly, the loose connection can cause overheating and arcing, which may trip

Mar 14, 2026

The Hidden Dangers of Loose Wiring

Introduction When it comes to home safety, we often think about smoke detectors, locks, or even routine plumbing checks— but one critical aspect that is sometimes overlooked is the health of your home's

May 19, 2026

What if a small loose connection inside your distribution box could ...

Neglecting maintenance can lead to: • Frequent tripping of circuits • Overheating of electrical components • Loose or burnt wiring connections • Equipment damage • Increased electrical

Contact Us

For more information, pricing, or custom solutions, please contact us:

Website: <https://elagage-lorrain.fr>

Email: sales@elagage-lorrain.fr

Phone: +33 6 47 82 19 35

Address: 15 Rue de la République, 69002 Lyon, France

This document is for informational purposes only. Specifications subject to change without notice.

