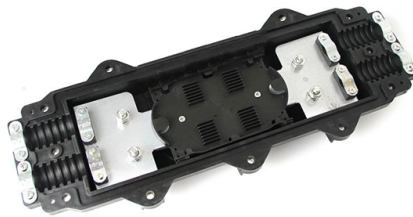


Drilling tools for the base plate of the distribution box



Overview

Drill: Make holes for screws and anchors. Wire strippers are essential when you install distribution box wiring. Don't. A drilling jig is a specialized tool used to guide the drill bit during drilling operations, ensuring precise hole placement, alignment, and diameter. Drilling jigs are designed for applications that require. Whether you're renovating a room, adding new outlets, or simply moving an existing one, drilling holes for electrical outlets is a common and necessary task. However, it's important to approach this task with caution and follow the right steps to ensure a safe and efficient installation. The following pages are devoted to the entire drilling assembly, from the swivel to the drill bit. This section concentrates upon commonly used power distribution equipment: Panelboards, Switchboards, Low-Voltage Motor Control. Drilling a hole through a base plate to install a new outlet may seem like a simple task, but it requires precision and careful execution.

Article Content

Mar 23, 2026

Understanding Distribution Boxes: A Comprehensive Guide

A distribution box, also known as a power distribution box or electrical distribution box, is used to distribute electrical power safely to multiple

Jul 06, 2025

What is an Electrical Distribution Box? A

Discover everything you need to know about electrical distribution box! Learn about types, components, and how to choose.

Sep 15, 2025

Junction box drilling 101: a step-by-step guide for beginners

By following the steps outlined in this guide, you can drill junction boxes with precision and confidence. Remember to prioritize safety, use the right tools, and take your time.

Oct 06, 2025

What Is a Distribution Box?

What to Look for When Choosing a Distribution Box If you're going to buy a distribution box, there are several things you should look for. You should

Jul 31, 2025

How to Install the Splitter Distribution Box

When installing and fixing the optical fiber distribution frame, an impact drill, hand hammer, and socket wrench are used, as shown in Figure 2-3. When

Nov 15, 2025

Drill Jigs Design: Types, Considerations, and Chip Control

Explore drill jig design, types (leaf, plate, box, indexing), design considerations, chip control, and jig feet. Ideal for mechanical engineering students.

Sep 24, 2025

The Importance of Distribution Boxes in Electrical Systems

Learn more about how distribution boxes play a critical role in the safe and efficient operation of electrical systems.

Dec 11, 2025

DRILLING ASSEMBLY HANDBOOK

tools that makeup the BHA. This handbook explains the purpose of each tool, how to select and proper assembly procedures for maximum effecti. eness and minimum trouble. Today the BHA serves

Nov 30, 2025

What hand and power tools are used to install a

Install distribution box systems with essential hand tools like screwdrivers and pliers, plus power tools such as drills and impact drivers for efficient setup.

Jun 16, 2026

Grounding System Installation Standards for Distribution Boxes and ...

Hey there! If you're working with electrical systems, you know that grounding isn't just some bureaucratic requirement—it's literally the difference between a safe, functional system and a potential disaster.

Jul 23, 2025

Distribution Box Guide: Types, Components & Solutions

Understand distribution boxes (DB boxes) in 5 minutes. Learn about types, components, functions, and uses. Find the perfect DB box for your needs.

Dec 25, 2025

Distribution Box: Types and Functions | Axis-Electricals

A distribution box ensures that electrical supply is distributed in the building, also known as a distribution board, panel board, breaker panel, or electric panel.

May 16, 2026

Power Distribution Equipment

Devices mounted in the switchboard may be either panel mounted (also referred to as group mounted), where they are mounted on a common base or mounting surface, or individually mounted, where

Apr 30, 2026

How to Drill Holes for Electrical Outlets?

Drilling holes for electrical outlets is a fundamental skill for any homeowner or DIY enthusiast. By following the step-by-step guide provided in this article and

Feb 01, 2026

How to determine the size, installation method and

9) The wood brick and iron parts needed for the installation of the distribution board need to be buried in advance, and the exposed distribution box should be fixed

Jul 20, 2025

Junction box drilling 101: a step-by-step guide for beginners

Electrical junction boxes play a crucial role in the distribution of electricity throughout a home or building. Proper installation of these boxes is essential for safe and efficient electrical

Aug 23, 2025

Designing Effective Drill Jigs | PDF | Drill | Drilling

Common jig types include plate jigs, channel jigs, pot jigs, and box jigs. Proper design ensures the jig and workpiece withstand drilling forces without deflection.

Apr 03, 2026

How to Install a Cable Distribution Box Safely and

In modern electrical systems, cable distribution boxes (also known as electrical distribution boxes or distribution boxes) play a crucial role as the key

Dec 28, 2025

Mounting Plates

Different plates for different uses: Stainless steel: is used to protect and protect electronic components and prevent their manipulation. Galvanized: it is the most

Apr 03, 2026

Installation process of distribution box

2. The wall mounted distribution box can be fixed on the wall with expansion bolts, but the dovetail bolts shall be embedded in the hollow brick or block wall or fixed

Dec 10, 2025

How To Drill A Hole Through A Base Plate For A New Outlet

By having a tape measure or ruler, pencil or marker, power drill, appropriate drill bit for the base plate material, safety goggles, and work gloves, you'll be well-prepared and equipped to tackle

May 14, 2026

Key Points Of Installation And Collocation Of Distribution Box In ...

Distribution box and switch box shall be made of iron plate or high-quality insulating material, and the thickness of iron plate shall be greater than 1.5mm The electrical equipment in the distribution box

Aug 28, 2025

What Is a Drilling Jig? Types, Design & Applications

A plate jig includes a base plate with drill bushings mounted to guide the tool. It is widely used for drilling holes in large parts, ensuring precise hole spacing and

Nov 04, 2025

Distribution Box and Selection Guide

Distribution Box Selection Guide This guide provides information on how to select the appropriate Distribution Box for Electric project. If you have any

Jul 08, 2025

Distribution Box Installation: Advanced Techniques

Distribution Box Installation: Advanced Techniques. The installation of a distribution box is explored in detail, highlighting advanced techniques for achieving a professional and efficient setup.

Contact Us

For more information, pricing, or custom solutions, please contact us:

Website: <https://elagage-lorrain.fr>

Email: sales@elagage-lorrain.fr

Phone: +33 6 47 82 19 35

Address: 15 Rue de la République, 69002 Lyon, France

This document is for informational purposes only. Specifications subject to change without notice.

