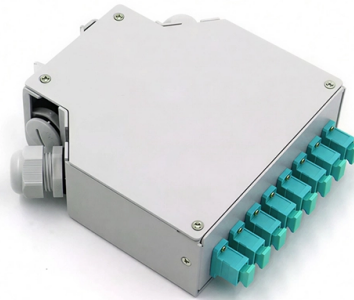


Dual-fiber bidirectional optical transceiver can use a single core



Overview

BiDi transceiver, a compact optical transceiver with WDM (wavelength division multiplexing) technology and SFP multi-source protocol (MSA) compliance, allows fast data transmission using a single fiber optic for both sending and receiving signals, saving resources and cutting. BiDi transceiver, a compact optical transceiver with WDM (wavelength division multiplexing) technology and SFP multi-source protocol (MSA) compliance, allows fast data transmission using a single fiber optic for both sending and receiving signals, saving resources and cutting. Should you use a single strand (BiDi) or two strands?

Do converters need to be used in pairs?

Can you mix brands?

What wavelengths matter?

This guide answers it all with clear diagrams, step-by-step checklists, and field-tested troubleshooting tips. A fiber media converter takes an Ethernet signal. A single fiber optical transceiver, known as BiDi transceiver, allows bidirectional communication over a single optical fiber. This design uses two different wavelengths for transmitting and receiving signals.

Article Content

Dec 28, 2025

LonRise Launches High-Performance OSFP-800G-DR8 Transceiver

Discover the details of LonRise Launches High-Performance OSFP-800G-DR8 Transceiver for Hyperscale AI Networking at LonRise Equipment Co. Ltd., a leading supplier in China for Optical

Aug 14, 2025

How to tell the difference between single mode and multimode fiber ...

It works with copper Ethernet cables or fiber optical cables. On the fiber optics side, there are single mode SFP module and multimode SFP module, which allows users to select the

Oct 19, 2025

Single-fiber Bidirectional Transceivers

Bidirectional transceivers transmit and receive optical signals through a single fiber, saving optical fiber resources. This is useful where fiber resources are scarce and

Dec 08, 2025

Differences Between Dual Fiber SFP and Simplex SFP

Dual fiber SFP modules are the commonly used 1G SFP module type. They operate on a bidirectional transmission mechanism and have two

Nov 25, 2025

Bi-Directional (BiDi) Transceivers Explained

Fiber optic Cabling technology is the backbone of modern networks, transmitting massive amounts of data at the speed of light. Understanding fiber

Apr 30, 2026

Turning Dual to Single Fiber for 50% Fiber Savings

RAD's BiDi QSFP adaptor is a passive, small-factor dual to single fiber adapter that can be plugged into existing SFPs, providing immediate savings for 1G, 10G, 100G, and 200G fiber infrastructure. There

Aug 27, 2025

Optical Component Startup Tracker

The number of venture-backed optical component startups has exploded - the Optical Component Start-Up Tracker identifies these companies

Sep 03, 2025

The Complete Guide to BiDi Transceiver

What Is BiDi Transceiver? BiDi transceivers have become synonymous with reliable and high-performance networking, which can achieve

May 01, 2026

BiDi Transceiver: Utilizing WDM Technology for Dual

BiDi transceiver, a compact optical transceiver with WDM (wavelength division multiplexing) technology and SFP multi-source protocol

Jan 29, 2026

Cisco 10GBASE SFP+ Modules Data Sheet

The Cisco 10GBASE SFP+ modules give you a wide variety of 10 Gigabit Ethernet connectivity options for data center, enterprise wiring closet, and

Apr 12, 2026

Understanding Bi-Directional Optical Transceiver

A new optical transceiver technology is now available that allows transceivers to both transmit and receive data to/from interconnected equipment

Feb 02, 2026

What is BiDi Transceiver: A Beginner's Guide

BiDi transceivers require only a single fiber for bi-directional data transmission. Compared to traditional dual-fiber networks, only a typical fiber is

Nov 03, 2025

Difference Between Single vs Dual Fiber Optical Transceivers

Single Fiber (BIDI): Utilizes a single optical fiber for both transmitting and receiving data. Achieves bidirectional flow through Wavelength Division Multiplexing (WDM), where different wavelengths are

Oct 29, 2025

What is BiDi Transceiver: A Beginner's Guide

What is a BiDi Transceiver? BiDi transceiver, or Bidirectional or simplex optical transceiver, is an optical module that uses Wavelength Division

Oct 25, 2025

Single vs Dual Fiber Media Converters (2025): A/B

Short answer: Usually yes, you use them in pairs, but the “pair” can be a media converter on one end and a fiber switch (or SFP in a switch) on the

Nov 09, 2025

What Is A Single-Fiber BiDi Transceiver?--ETU-LINK

When planning a fiber optic network, one key decision is choosing between single-fiber (BiDi) and dual-fiber optical transceivers. This guide from ETU-Link explains

Oct 15, 2025

Single Fiber vs Dual Fiber Transceivers Understanding

A dual fiber optical transceiver uses two separate fibers—one for transmitting and the other for receiving data. This design ensures higher

Jan 21, 2026

What Is A Single-Fiber BiDi Transceiver?--ETU-LINK

Single fiber module also called BiDi transceiver or WDM module. It uses WDM technology to realize the bidirectional transmission of optical signals on one

May 22, 2026

Bidirectional or BiDi Transceivers Explained

Bidirectional (BiDi) transceivers are SFP transceivers that are able to send and receive data on the same fiber. Without BiDi, data can only travel in one direction on a single fiber, meaning each

Apr 10, 2026

Custom 100G QSFP28 SRBD Module | Duplex LC MMF

Dual-Wavelength PAM4: Multiplexes 850nm and 900nm optical frequencies to execute concurrent 50G bidirectional transmission and reception within a single multimode core. Wideband Fiber

Apr 03, 2026

Next-Generation Connectivity: The Rise of 800G OSFP 2*FR4 Optical ...

At its core, an 800G OSFP 2*FR4 transceiver is a hot-pluggable optical module designed for 800 Gigabit Ethernet links. Unlike traditional single-channel modules, the "2*FR4" designation

Mar 24, 2026

Difference Between Single and Dual Fiber Optical

Fiber optic technology has seen incredible growth over the past several years and will likely experience even more expansion over time. There

May 08, 2026

Difference Between Single and Dual Fiber Optical

Know the key differences between Single and dual-fiber optical transceivers for efficient network deployment and optimization.

Feb 14, 2026

Bi-Directional (BiDi) Transceivers Explained

The ability to utilize a single fiber for bidirectional communication is a key advantage of BiDi transceivers, making them an essential component in

Sep 04, 2025

Multimode vs Single Mode Fiber Patch Cords: Which

Find out how to choose between single mode patch cord, lc lc single mode, sc lc single mode, and duplex OM3 multimode fiber for reliable network

Contact Us

For more information, pricing, or custom solutions, please contact us:

Website: <https://elagage-lorrain.fr>

Email: sales@elagage-lorrain.fr

Phone: +33 6 47 82 19 35

Address: 15 Rue de la République, 69002 Lyon, France

This document is for informational purposes only. Specifications subject to change without notice.

