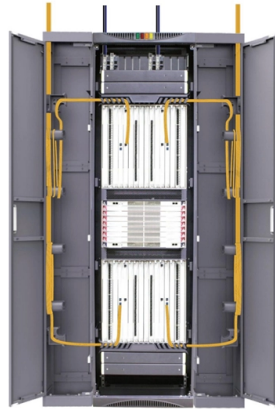


How to avoid conflicts between cable trays and pipes



Overview

Avoiding Crossovers and Congestion: If trays must intersect, use multi-level layouts or bridges to avoid physical cable crossovers. This reduces cable wear and makes individual cable trays easier to access for repairs and upgrades. Adequate separation not only prevents damage to the cables or pipes but also reduces the risk of fire, electrical failures, or other dangerous conditions that could arise. Assuming you're talking about hung cable tray (not cable tray on the floor. cables can usually (not. Below are the key principles to guide the layout of E&I cable trays, focusing on practical, safety, and efficiency aspects. This. How far apart should cable trays be supported?

What's the risk if support spacing is too wide?

Can I reconfigure tray layouts later?

What's the best tray material for outdoor use?

How can I reduce electromagnetic interference in trays?

What are the common faults in cable?

What is the most common. The correct installation of cable trays is crucial for establishing a reliable and efficient cable system.

Article Content

Jul 18, 2025

Core Principles for Electrical and Instrumentation Cable

Avoiding Crossovers and Congestion: If trays must intersect, use multi-level layouts or bridges to avoid physical cable crossovers. This reduces cable wear and

Mar 29, 2026

Cable Tray Design, Layout, and Overall Wiring Planning

Learn about effective Cable Tray Design and Layout for electrical systems. Our guide covers planning, material choice, safety, and maintenance.

May 15, 2026

Cable Tray and Water Pipe Clearance NEC Requirements

Learn about the required clearance between cable trays and water pipes according to the National Electrical Code. This video explains the NEC regulations for both vertical and horizontal water ...

Apr 08, 2026

Cable Route guidelines | Eng-Tips

The cable trays I've seen are always run at an elevation below the ductwork all but eliminating conflicts. Then during construction, the GC will offset small duct branches, piping and

Nov 17, 2025

such/ignore.txt at main · yeerma/such · GitHub

aasdadasa. Contribute to yeerma/such development by creating an account on GitHub.

Oct 03, 2025

Avoiding Mistakes in Instrumentation Cable Tray

Learn how to avoid common mistakes in instrumentation cable tray installation. Follow IEC standards and EPC best practices for safe, reliable

Sep 28, 2025

Cable Tray SHIB NAL

Cable trays are not raceways, but they are treated as a structural component of a facility's electrical system. Cable trays are a part of a planned cable management system to support, route, protect and

May 09, 2026

Cable Tray Technical Guide A practical guide to product selection and ...

A practical guide to product selection and installation This guide for engineers and installers has been developed by ABB as a practical reference regarding cable tray characteristics, installation, and

Aug 12, 2025

Cable Tray Installation Mistakes to Avoid for Better

Avoid common issues in cable tray installation that lead to downtime or hazards. Find expert tips to improve system efficiency and reliability.

Jan 25, 2026

Avoiding Mistakes in Cable Tray Installation

Avoid common cable tray installation mistakes to ensure safe, compliant, and efficient electrical infrastructure.

Jan 08, 2026

Cable Trays vs Conduits: Which One Should You

But how do you decide which one is right for your project? In this post, we'll explore the key differences between cable trays vs conduits, highlight their pros and

May 25, 2026

The pipelines and cable trays location problem in naval design

This paper deals with the determination of optimal locations for pipelines and cable trays in naval design. The problem consists of finding the number and types of cable tray routes to be

Feb 25, 2026

Best Practices for Installing Cables in Trays

Quick Installation Checklist (Key Steps) Cable tray cable installation generally follows these steps: Inspect cables before

Apr 25, 2026

Cable Tray Questions | Cable Tray Institute

Answer: No. Cable trays are a support system for electrical cables, power, signal, and communication and optical fiber cables. NEC section 300-8 does not permit any tube, pipe, or equal for water, air

Nov 16, 2025

Route piping over or under cable trays? | Eng-Tips

If radiant heat or possible high pressure spray from a leaking fitting is a problem, it is relatively easy to shield the cable tray from either of those hazards.

Apr 03, 2026

Precautions for Cable Tray Installation

We have summarized the precautions for cable tray installation to help customers quickly and correctly install cable trays.

Oct 03, 2025

Mech Pipes crossing above cable tray | Information by Electrical ...

I don't see a pipe crossing, even a 1" above the tray as a issue that would cause problems installing the cables and/or conductors in the tray. Now if there are a number of pipes next to each

May 25, 2026

Common Issues in Steel Cable Tray Installations

For engineers, contractors and facility managers, understanding common problems in steel cable tray installations - and knowing how to avoid

Jun 26, 2025

Cable Tray Spacing Standards for Installation and Safety

Discover the essential cable tray spacing requirements for safe and efficient installation. Learn key standards, horizontal and vertical spacing, and more.

Jul 01, 2025

How to Prevent Fire and Electric Hazards in Cable Tray

Safety of a cable tray is not a matter of compliance with codes, but a matter of saving human life and billions of dollars" worth of infrastructure. Poorly

Jan 05, 2026

Good practice rules for electromagnetic compatibility

Wire tray does not have any intrinsic screening qualities while prefabricated trunking is particularly effective on this point. Cable tray, trunking

Nov 11, 2025

How to Manage Cables in Cable Trays: Principles and Methods

Learn how to manage cables in cable trays effectively with our comprehensive guide for cable classification, protection, and installation to ensure electrical system safety and efficiency.

Jul 11, 2025

Common Issues in Steel Cable Tray Installations

Learn how to avoid common mechanical, corrosion, and electrical issues in steel cable tray installations. Get expert troubleshooting tips for better

Mar 02, 2026

Cable Tray vs. Conduit: A Comparison for Large-Scale

Decide between cable trays and conduits for your project. This guide compares cost, flexibility, and installation ease to help you choose the best cable

Feb 07, 2026

Safety Distances Between Cable Trays and Pipes

Learn about the importance of cable trays and pipes safety distances in ensuring system reliability. Explore standards, factors, and measures to

Dec 13, 2025

Core Principles for Electrical and Instrumentation Cable

This reduces cable wear and makes individual cable trays easier to access for repairs and upgrades. Service Access: Layouts should allow easy access to

Aug 29, 2025

Beama Best Practice Guide | Installation Of The System | Cable ...

The following recommendations are intended to be a practical guide to ensure the safe and proper installation of cable ladder and cable tray systems and channel support and other support systems.

Sep 15, 2025

Cable Tray Systems: Requirements and Best Practices

Comprehensive guide to cable tray systems requirements: tray types, materials, loading, supports, bonding, routing, and best practices for safe electrical cable management.

Jun 02, 2026

How to Fix Common Cable Management Issues using

This comprehensive guide investigates the most frequent wire management challenges faced in real-world setups and demonstrates how the

Contact Us

For more information, pricing, or custom solutions, please contact us:

Website: <https://elagage-lorrain.fr>

Email: sales@elagage-lorrain.fr

Phone: +33 6 47 82 19 35

Address: 15 Rue de la République, 69002 Lyon, France

This document is for informational purposes only. Specifications subject to change without notice.

