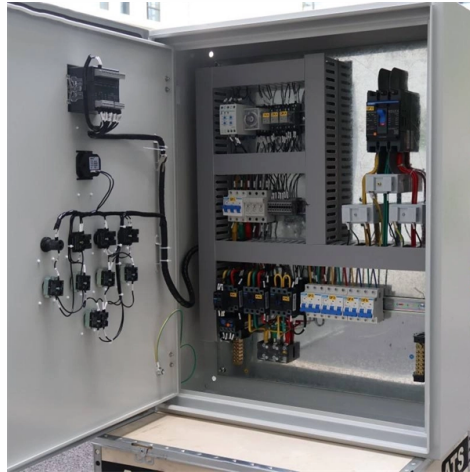


PoE switch automatic identification



Overview

1AB standard that enables devices within a network to automatically discover and share key information, such as device identity, port details, and PoE (Power over Ethernet) requirements. These sections provide information about the conditions required for a PoE capable switch to provide power, how the PoE-capable switch identify the power requirement of the powered device, and how PoE. Toggle the hierarchy tree under Learn Applications Solutions at Microchip. Power over Ethernet (PoE) detection is a critical function within a PoE. Before a compliant PSE provides power to a powered device (PD), it has to identify it, i. to determine that on the other side of the cable there is a device capable of accepting power. This process is called detection. With LLDP, devices can effectively "announce themselves to the network, laying the foundation for smarter, automated management.

Article Content

Mar 11, 2026

1000Mbps Automatic Identification POE Switch for 24V

1000Mbps Automatic Identification POE Switch for 24V and 48V with 2 SFP Ports
POE0802SFPB-3A - Chinasky Products Made In China, China Manufacturer.

Nov 19, 2025

How LLDP Enhances Intelligent Management in FS PoE Switches

These switches leverage LLDP to automatically identify endpoint types, report PoE status, and provide real-time visibility of aggregated links, making network deployment simpler and more

Nov 11, 2025

What is a PoE switch (Power over Ethernet switch)?

A PoE switch provides power and network connectivity over Ethernet cables to access points, security cameras, and other Internet of Things devices

May 21, 2026

1000Mbps Automatic Identification POE Switch for 24V and 48V with 2

Product Show Company Related Products CCTV 24 Port 1000Mbps 300W PoE Network
Power over Ethernet Switch with Gigabit U OEM Factory Price 28 Ports
10/100/1000Mbps Network PoE Switch

Nov 08, 2025

PoE Watchdog, PD Alive and PDM

All about PoE Self-Healing Switches. A PoE watchdog function on a Power over Ethernet network switch is a “self-healing” network feature that monitors the

Dec 20, 2025

PoE, powered device, and switch | PoE | PoE Configuration Guide

These sections provide information about the conditions required for a PoE capable switch to provide power, how the PoE-capable switch identify the power requirement of the powered

Aug 23, 2025

Frequently asked questions of PoE Auto Recovery | TP

With PoE Auto-Recovery enabled, the switch will constantly detect the data transmission with PoE powered devices (PD). When the switch finds that a PD

Jun 26, 2025

How to Identify PoE and Non-PoE Switch

Identifying a PoE switch involves examining its specifications and physical characteristics. The first step is to check the product documentation or

Oct 21, 2025

Configuring Power Over Ethernet

This chapter contains the following sections: Monitoring Power Status Information About Power over Ethernet Power over Ethernet Ports A Power over Ethernet (PoE)-capable switch port

Jan 27, 2026

1000Mbps Automatic Identification POE Switch for 24V and 48V with 2

Minimum Order Quantity:Negotiable Packaging Details:Carton packing Delivery Time:5-12 working days Comply to POE IEEE 802.3af/at standard Payment Terms:T/T, L/C, Paypal, Western Union,

Feb 25, 2026

PoE TESTER

The PoE Tester is a multifunction tool that identifies the Class of the PoE source, injector type and power available to a PoE device regardless of cable length,

Nov 26, 2025

Was ist ein PoE-Switch: Anwendungen & Auswahlhilfe

Sie fragen sich, was ein PoE-Switch ist? Erfahren Sie hier, wie er funktioniert, welche Geräte er versorgt, welche Vorteile und Nachteile er hat und

Jul 22, 2025

What is a PoE Switch

Network switches form the backbone of any Local Area Network, or "LAN" (pronounced "lan") for short. On this page you will learn what differentiates

Jun 02, 2026

How to Identify PoE and Non-PoE Switch

As technology continues to evolve, both PoE and non-PoE switches will play essential roles in shaping the future of networking. Whether you're setting up a

Nov 09, 2025

Troubleshooting Power over Ethernet (PoE)

Revised August 23, 2010 This guide is for troubleshooting Power over Ethernet (PoE) in the Catalyst 3750-E, 3750, 3560-E, and 3560 switch product families.

Jul 29, 2025

What is a POE Switch? A Guide to Powering Your

One such tool is the Power Over Ethernet (POE) switch. But what is a POE switch? This comprehensive guide will delve into the world of POE switches,

Apr 10, 2026

PoE Troubleshooting: Addressing Common Issues

This article addresses common PoE network issues, best practices for maintenance, troubleshooting tools, and real-world case studies.

Feb 23, 2026

TOUGHSwitch PoE User Guide

The TOUGHSwitch is a managed switch designed to deliver Power over Ethernet (PoE) on the 10/100/1000 ports you have configured for PoE. It also features a variety of features, including port

Jun 26, 2026

What Is a PoE Switch? Complete 2025 Guide (For Everyone)

Learn what is a PoE switch, how it works, types, power budgets, and real uses. Simple 2025 guide for home, office, and

Jan 28, 2026

How Power over Ethernet (PoE) Detection Works

Power over Ethernet (PoE) detection is a critical function within a PoE system. Its primary role is to determine whether the remote equipment connected to a Power Sourcing Equipment (PSE)

Mar 22, 2026

EdgeSwitch ES-24-250W/ES-24-500W Quick Start Guide

Configuring PoE Settings The PoE settings for ports 1-24 are set to PoE+ by default, so 802.3af/at devices can be plugged in and automatically receive PoE. **WARNING:** Before activating 24V passive

Jun 03, 2026

Pongnas Network POE Tester Automatic Identification CAT5 CAT6

[Automatic Identification] : This network poe tester automatically identifies poe voltage standards for precise testing, ranging from 0 to 60v, ensuring accurate results.

Feb 26, 2026

POE Tester Gen2.5

What does it do? Use the Gen2.5 to test PoE cameras, VOIP phones, and WiFi installations without interrupting data flow, quickly detect and identify PoE type,

Feb 17, 2026

MicroScanner PoE

How to use MicroScanner PoE to check PoE on a port: Connect MicroScanner PoE to the switch port and press the PoE button. The display shows searching while

Apr 14, 2026

Detection in PoE Systems

Before a compliant PSE provides power to a powered device (PD), it has to identify it, i.e. to determine that on the other side of the cable there is a device capable of

Jan 13, 2026

How To Check If Switch Is POE Enabled? Easy Trick

How To Check If Switch Is POE Enabled? Easy Trick When you are planning to setup a cctv camera in your network, you may need a

Apr 22, 2026

Understanding the IEEE 802.3bt PoE Standard

Although introduced in previous PoE standards, link layer discovery protocol (LLDP) is even more useful when using the higher power 802.3bt standard. For many years, Ethernet networks have used LLDP

Contact Us

For more information, pricing, or custom solutions, please contact us:

Website: <https://elagage-lorrain.fr>

Email: sales@elagage-lorrain.fr

Phone: +33 6 47 82 19 35

Address: 15 Rue de la République, 69002 Lyon, France

This document is for informational purposes only. Specifications subject to change without notice.

