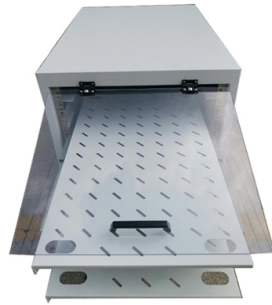


Purpose of Fire Protection Lighting Distribution Box



Overview

Fire-rated junction boxes provide an extra layer of protection in the event of a fire, ensuring circuit integrity and maintaining power for vital systems like fire alarms, emergency lighting and safety equipment. Why Use Fire Rated Junction Boxes?

During a fire, standard junction boxes can melt or. Maintenance of the electrical function exists when the current flow is not interrupted during a fire. This allows, for example, emergency lighting, venti-lation and fire alarm systems to continue working and emergency and escape routes to remain usable. The longer these technical systems work, the. According to the National Fire Protection Association (NFPA), electrical failures contribute to around 43% of home fires in the United States, underscoring the critical role distribution boxes play in preventing accidents and ensuring safety. As a leading. Circuit Breakers or Fuses: These safety devices automatically stop the flow of electricity during faults or overloads. A Flameproof junction box takes this idea a step ahead.

Article Content

Sep 18, 2025

Fire emergency lighting distribution box-Kaifeng Albert Electrical ...

Meet the standard GB17945-2010 "Fire Emergency Lighting and Evacuation Indication System". Centralized control emergency lighting distribution box. Equipped with communication routing

Jul 16, 2025

Working principle of lighting distribution box

Residential lighting distribution box Lighting distribution box is a low-voltage lighting distribution box composed of switchgear, measuring instruments, protection

Mar 23, 2026

Fire protection cable boxes: Spelsberg

As a leading manufacturer of high-quality cable junction and connection boxes, as well as durable surface-mounted distribution boards, Spelsberg is especially well-qualified for development of fire

Jan 13, 2026

Flameproof Whether proof Lightning Junction Box

Manufacturer of Flameproof Whether proof Lightning Junction Box - Flameproof Lightning Distribution Board, 4 Way Flameproof Lighting Distribution Board, 6

Sep 29, 2025

Flameproof Junction Box: A Detailed Guide

In this guide, we will teach you everything you need to know about flameproof junction boxes. Discover why they're used, their applications, who

Jun 02, 2026

Explosion proof distribution box standards and installation issues ...

Explosion-proof distribution boxes are mainly used in coal mines, fire stations, petroleum, petrochemical installations and textile and other flammable and explosive places. These places are more prone to

Dec 24, 2025

Why You Need a Distribution Box: Key Benefits and Applications

According to the National Fire Protection Association (NFPA), electrical failures contribute to around 43% of home fires in the United States, underscoring the critical role distribution boxes

Aug 23, 2025

What is a Distribution Box? – A Comprehensive Guide

Key Components of a Electrical Distribution Box Circuit breakers are essential for protecting electrical systems by cutting off power during overloads or

Sep 15, 2025

Distribution Boards

Distribution boards, often referred to as electrical panels or breaker boxes, serve as the nerve center of any electrical system. Here we explore the crucial parts of a distribution board and gain insights into

Feb 16, 2026

Business Standard

Hier sollte eine Beschreibung angezeigt werden, diese Seite lässt dies jedoch nicht zu.

Aug 12, 2025

Emergency Lighting Distribution Box|New Idea Electric Co.,Ltd.

The function of the emergency lighting distribution box is to supply power to the emergency lighting and evacuation indication lighting circuit in the event of an accident (including fire situation).

Apr 05, 2026

Reuters | Breaking International News & Views

Find latest news from every corner of the globe at Reuters , your online source for breaking international news coverage.

Jul 03, 2025

Emergency lighting distribution box-Kaifeng Albert

Emergency lighting controller Emergency lighting distribution box Emergency lighting centralized power supply Emergency sign light Emergency lighting Solution High

Jun 26, 2026

High-Quality Electrical Lighting Distribution Boxes Explained

Electrical lighting distribution boxes, also known as lighting control panels or lighting distribution boards, are specialized enclosures designed to house and protect electrical components that control and

Oct 19, 2025

Lighting Distribution Boxes for Power Control

These boxes seamlessly integrate with various Lighting Accessories and support complete Lighting Distribution Systems, including Marshalling Boxes and Lighting Control Modules. They're perfectly

Jan 18, 2026

Lighting Distribution Box: Safety, Efficiency, and Convenience in ...

The lighting distribution box is a critical component in modern electrical systems, designed to manage and distribute electrical power to lighting fixtures efficiently and safely. Its main functions include

Aug 25, 2025

What is a Fire Protection Junction Box?

Fire-rated junction boxes provide an extra layer of protection in the event of a fire, ensuring circuit integrity and maintaining power for vital systems like fire alarms, emergency lighting and safety

Feb 23, 2026

Lightning Protection Box - Surge Protection

Electrical equipment such as lightning counters and surge protective device are installed inside the lightning protection box. It is mainly used for

May 17, 2026

Distribution Boxes: Types and Functions

Distribution boards can be customized to meet different wiring layouts, circuit quantities (ways), and environmental requirements such as IP

Oct 21, 2025

Power Distribution Boxes Explained Simply

Discover the essentials of a Power Distribution Box—how it works, key types, benefits, and tips to ensure safe, efficient electrical power management.

May 14, 2026

Distribution Boxes Explained: Types, Functions, and

This immediate response helps prevent damage to the electrical system and reduces the risk of electrical fires. This protective function makes

May 09, 2026

Power Distribution Boxes Explained Simply

Learn what a power distribution box is, how it works, key components, types, and why it's vital for safe and efficient electrical systems.

Sep 28, 2025

The purpose, working principle, and usage instructions

The purpose of the distribution box is to distribute electrical energy reasonably and facilitate circuit opening and closing operations. Has a high level

Aug 22, 2025

The Importance Of Distribution Box In Fire Zone

The end dual power supply automatic switching emergency distribution box shall be set up according to the fire zone to provide the standby lighting and evacuation lighting power in the zone.

Contact Us

For more information, pricing, or custom solutions, please contact us:

Website: <https://elagage-lorrain.fr>

Email: sales@elagage-lorrain.fr

Phone: +33 6 47 82 19 35

Address: 15 Rue de la République, 69002 Lyon, France

This document is for informational purposes only. Specifications subject to change without notice.

