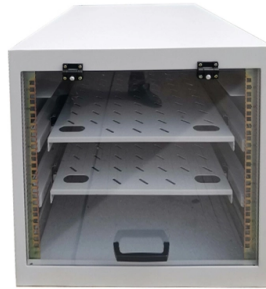


TI cable tray 90-degree bend dimensions



Overview

Pre-galvanized steel fitting 6 inches side rail height 9 inches width solid trough vertical inside bend 90 degree 24 inches radius For more info visit: electrification.com Made or assembled in Canada. The most deployed type of Sendzimir steel is Z 275 = 275g/m² (weighed on both sides), this corresponds to 18-20 μm (micron). The us-trations without notice. The mechanical and electrical characteristics, tests, certifications, overall quality management, recommendations mentioned. 45° & 90° flat bends are available for light, medium and heavy duty cable tray systems with widths ranging from 50mm - 900mm. Materials and finishes available are mild. Name: Cablofil EZT90EZ EZT Model Cable Tray Tee Bend Kit, 90-Degree, 8. 75"H, Electro zinc Steel Category: Cablofil by Legrand, Data Comm & Networking, Cable Management, Cable Trays, Ladders & Fittings UPC Code: 800388008694 Country of Origin: China. ASP 90° Cable Trays offers a 24" bend radius for ease of coax installation and are available in standard depth of 4" with optional depth of 6". Easily connects to the property of Advanced Support Products, Inc. This print is furnished with the.



Article Content

Sep 04, 2025

90° Bend Transition Tray

90° Bend Transition Tray This model is a horizontal 90 degree turn bend transition tray. This 90 degree tray offers a 24" bend radius for ease of coax installation. Connects to any ASP cable tray with splice

Mar 09, 2026

Aluminum Cable Tray

T& B aluminum cable tray is composed of two distinct systems H-Style and U-Style. These systems are interchangeable.

Apr 09, 2026

Cable Tray

Shop for Cable Tray - Bends at Platt HellermannTytonGÇÖs low voltage raceway (TSR) is a one piece, non-metallic, adhesive backed, latching raceway designed to aesthetically organize and route

Dec 17, 2025

Cable Tray Flat Bends | Cable Management | Metsec

45° & 90° flat bends are available for light, medium and heavy duty cable tray systems with widths ranging from 50mm - 900mm. An adjustable bend with 30° ,

Aug 25, 2025

Channel tray

T& B channel tray systems are fabricated from a corrosion-resistant metal (low-carbon steel, stainless steel or an aluminum alloy) or from a metal with a corrosion-resistant finish (zinc or epoxy). The

Dec 25, 2025

1 T Or 2 90 Degree Bend Kit-Outdoor Finish | Wire Mesh Trays

90-degree and tee bend kit. One kit contains hardware for one tee or two 90-degree bends. Slotted design fits any size tray and eliminates precise tray alignment.

Mar 02, 2026

Cable Tray Bend | Trayco

Characteristic of this steel type is that – prior to mechanical deformation – it is given a zinc coating by means of a continuous dipping process. This zinc coating is

Mar 16, 2026

Fiberglass cable tray 90 degree horizontal bend assembly submittal

90-degree horizontal bend assembly for fiberglass cable trays, designed for efficient cable management and routing in industrial environments.

Apr 30, 2026

Cable Tray Design and Components Guide

Tables list standard sizes and specifications for straight and bent cable trays, including width, height, thickness, materials, and finishes. Drawings show

Dec 13, 2025

GI Pre-Galvanized 90 Degree Horizontal Cable Tray

Metalix Cable Trays - Offering GI Pre-Galvanized 90 Degree Horizontal Cable Tray Bend, Size: 1m at ₹ 250/piece in Hyderabad, Telangana. Also find Cable Tray

Feb 12, 2026

SHF630SVI9012 | Bend for cable tray | T& B Cable Tray | Wire & Cable ...

Catalog No. : SHF630SVI9012 Description: HDG 30INW 6IND IV-90 12INRAD SLD. UPC: 785055113195 Made or assembled in Canada. Hot-dipped galvanized steel fitting 6 inches side rail

Jul 15, 2025

SPF609SVI9024 | Bend for cable tray | T& B Cable Tray | Wire & Cable ...

T& B Cable Tray Bend for cable tray View Larger Catalog No. : SPF609SVI9024 Description: PG FIT 6IN 9W SOL VI 90D24R UPC: 785055316855 Made or assembled in Canada. Pre-galvanized steel fitting

Sep 19, 2025

AUF509LHB9036 | Bend for cable tray | T& B Cable Tray | Wire & Cable ...

T& B Cable Tray Bend for cable tray View Larger Representative Image Catalog No. : AUF509LHB9036 Description: AL FIT 5IN 9W LAD HOR. BEND 90D36R UPC: 626490672833 Made or assembled in

Nov 29, 2025

Cable Tray Design and Components Guide

This document provides information about cable trays and accessories, including straight cable trays, perforated trays, returned edge and flange types, and bent

Jan 13, 2026

1 T Or 2 90 Degree Bend Kit-Ez | Wire Mesh

Contains: One Kit contains hardware for one tee or two 90 degree bends. Slotted Design: fits any size tray and eliminates precise tray alignment. UL

Nov 03, 2025

Cablofil EZT90EZ EZT Model Cable Tray Tee Bend Kit,

Main Features One Kit contains hardware for one tee or two 90 degree bends Slotted design fits any size tray and eliminates precise tray alignment

Oct 18, 2025

1 T Or 2 90 Degree Bend Kit-Outdoor Finish | Wire Mesh Trays | Cable ...

Discover how the 90-Degree and Tee Bend Kit's slotted design fits any tray size, eliminating the need for precise alignment and providing you with flexible, efficient cable management. Kit includes hardware

Jul 12, 2025

SPF609SVI9024 | Bend for cable tray | T& B Cable Tray | Wire

Pre-galvanized steel fitting 6 inches side rail height 9 inches width solid trough vertical inside bend 90 degree 24 inches radius. For more info visit: electrification.abb . Made or assembled in Canada.

Oct 28, 2025

AUF630SHB9012 | Bend for cable tray | T& B Cable Tray

Aluminum U-style fitting 6 inches side rail height 30 inches width solid trough horizontal bend 90 degree 12 inches radius

Sep 25, 2025

Heavy Duty 90° Cable Tray Bend

The cable tray products are designed for use in numerous commercial and industrial applications. Available in standard and bespoke sizes with various finish options.

Sep 08, 2025

SPUF624VVO9012 | Bend for cable tray | T& B Cable Tray | Wire & Cable ...

Pre-galvanized steel one-piece tray fitting 6 inches side rail height 24 inches width ventilated vertical outside bend 90 degree 12 inches radius

Nov 09, 2025

ADVANCED S PRODUCTS | ASP 90° Turn Cable Tray

Specification Sheet Materials inuuous system as well as stand-alone elements. ASP 90° Cable Trays offers a 24" bend radius for ease of coax installation and are available in sta arnd depth of 4" with

Apr 28, 2026

GUIDE CABLE TRAYS TECHNICAL

NEMA VE 1-2017 Specifies requirements for metal cable trays and associated fittings designed for use in accordance with the rules of Canadian Electrical Code, Part I and the National Electrical Code®

Jun 27, 2025

Cable Trays Catalog

90°Radius Bends Wire Mesh Cable Tray L (90 degree) Junction Instructions CABLE TRAY CUTTING & BENDING GUIDES CONFIGURING CABLE TRAYS FOR INSTALLATION 90° Bends Assembled

May 14, 2026

AUF512SVI9024 | Bend for cable tray | T& B Cable Tray | Wire & Cable ...

Aluminum U-style fitting 5 inches side rail height 12 inches width solid trough vertical inside bend 90 degree 24 inches radius

Mar 20, 2026

SSF624VVI9012 | Bend for cable tray | T& B Cable Tray | Wire & Cable ...

Catalog No. : SSF624VVI9012 Description: SS 24INW 6IND IV-90 12INRAD VTD. UPC: 785055510109 Made or assembled in Canada. Stainless steel 316 fitting 6 inches side rail height 24 inches width

Contact Us

For more information, pricing, or custom solutions, please contact us:

Website: <https://elagage-lorrain.fr>

Email: sales@elagage-lorrain.fr

Phone: +33 6 47 82 19 35

Address: 15 Rue de la République, 69002 Lyon, France

This document is for informational purposes only. Specifications subject to change without notice.

